



BSc in Geology

If you have done **GEOL20250** and **GEOL20210** in Stage 2 then you can choose to do a degree in Geology.

conrad.childs@ucd.ie

UCD School of Earth Sciences

STAGE 3

GEOL30040
Sedimentary
Environments

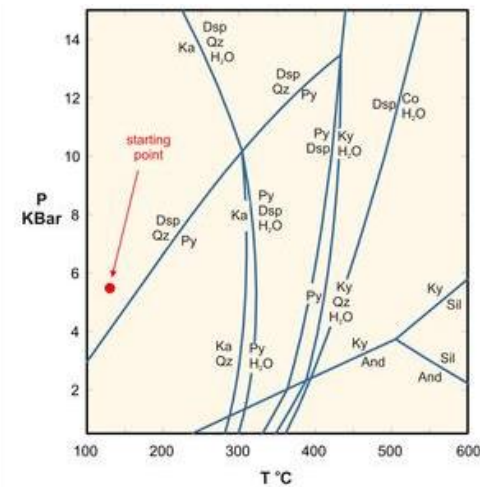
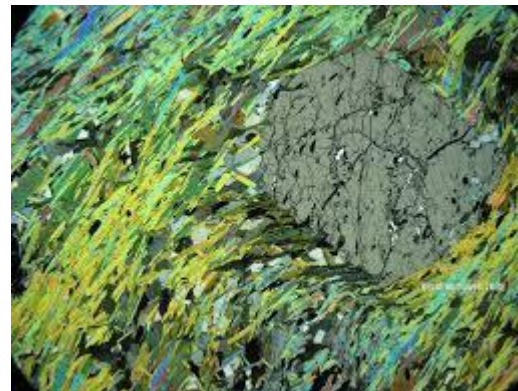
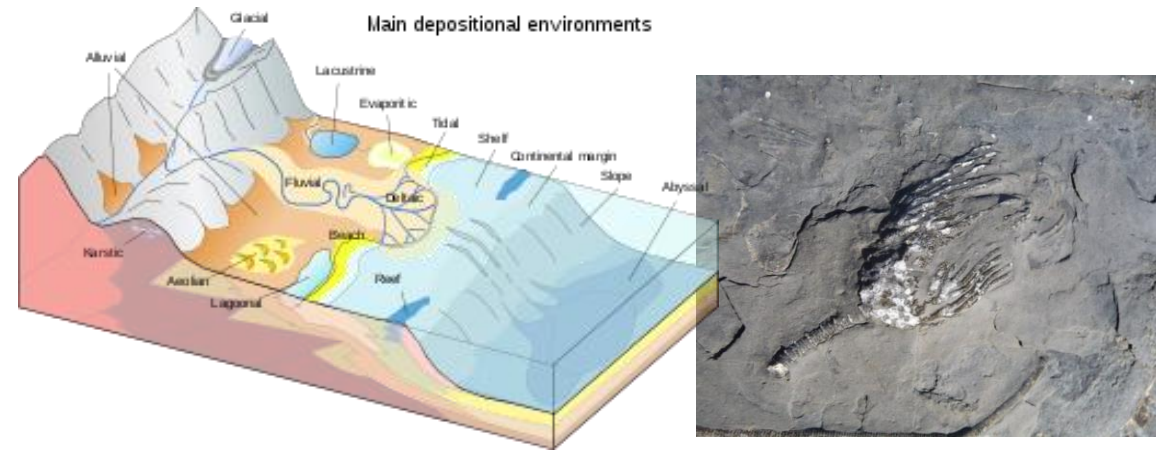
GEOL30010
Applied
Palaeontology

GEOL30350
Geological
Structures

GEOL30340
Low
Temperature
Geochemistry

GEOL30240
Igneous
Petrology

GEOL30110
Metamorphic
Petrology

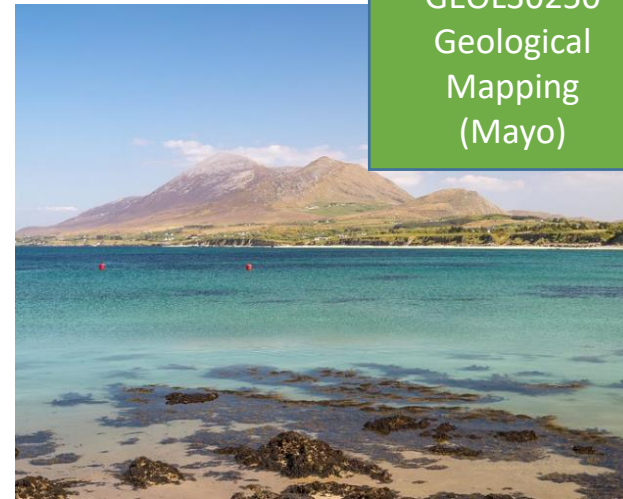


STAGE 3

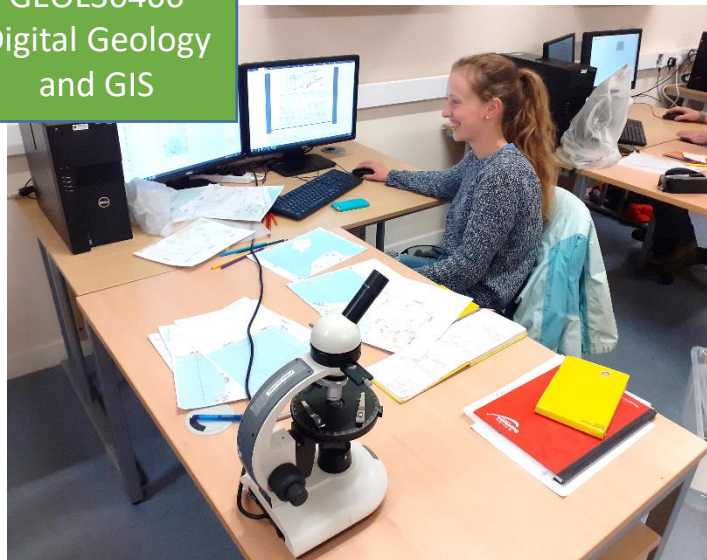
GEOL30320
Geological
Fieldwork
(England)



GEOL30250
Geological
Mapping
(Mayo)



GEOL30400
Digital Geology
and GIS



GEOL30380
Geomaterials
and Geoenergy



STAGE 4

GEOL40510
Geological Mapping
Research



GEOL40490
Quaternary Geology

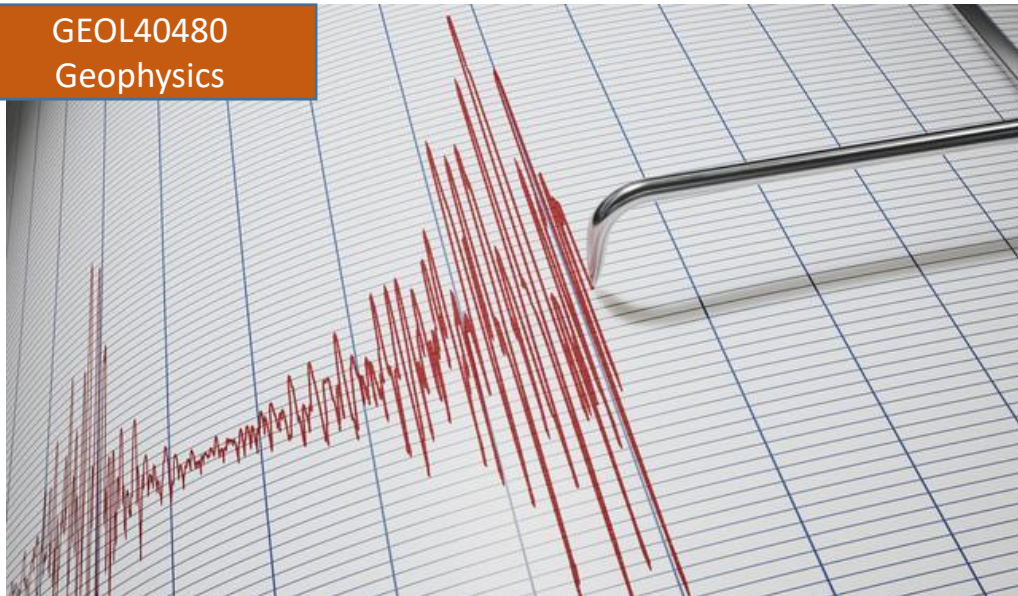


GEOL40190
Igneous and Ore
Geology

GEOL40290
Basin Analysis

GEOL40460
Advanced
Geological Mapping

GEOL40480
Geophysics



GEOL40470
Geological
Fieldwork (Spain)





BSc in Geology

If you have done **GEOL20250** and **GEOL20210** in Stage 2 then you can choose to do a degree in Geology.

conrad.childs@ucd.ie

UCD School of Earth Sciences